

Immigration Through a Different Prism

Ali Modarres
Pat Brown Institute

Four topics to consider

- n our region as the center of global immigration
- n immigrants as young men from Mexico
- n immigrants and immigration causing all sorts of social and economic problems
- n we are the same, but immigrants have changed

Global Migration

- n 1965 – 75 million
- n 1975 – 84 million
- n 1985 – 105 million
- n 1990 – 120 million
- n Most recent information: 175 million
- n Annual rate of global migration has remained constant (at about 3%) over the last five decades.

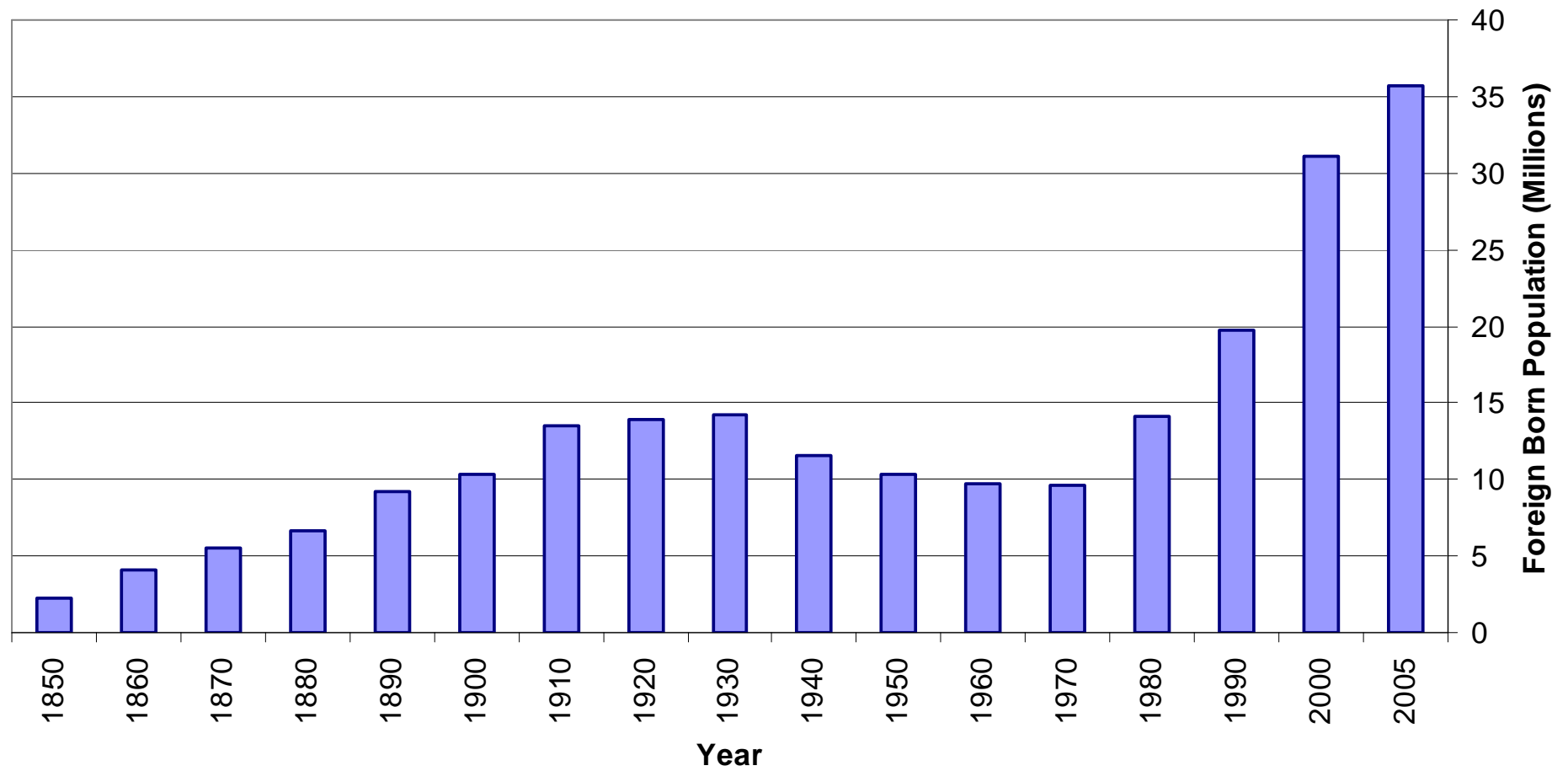
Sources:

1. De Hass, Hein. (April 2005) "International migration, remittances and development: myths and fact." *Global Migration Perspectives, No. 30*. Global Commission on International Migration.
2. Williamson, Jeffrey G. (May 11, 2004) *The Political Economy of World Mass Migration: Comparing Two Global Centuries*. American Enterprise Institute, The Wendt Distinguished Lecture.

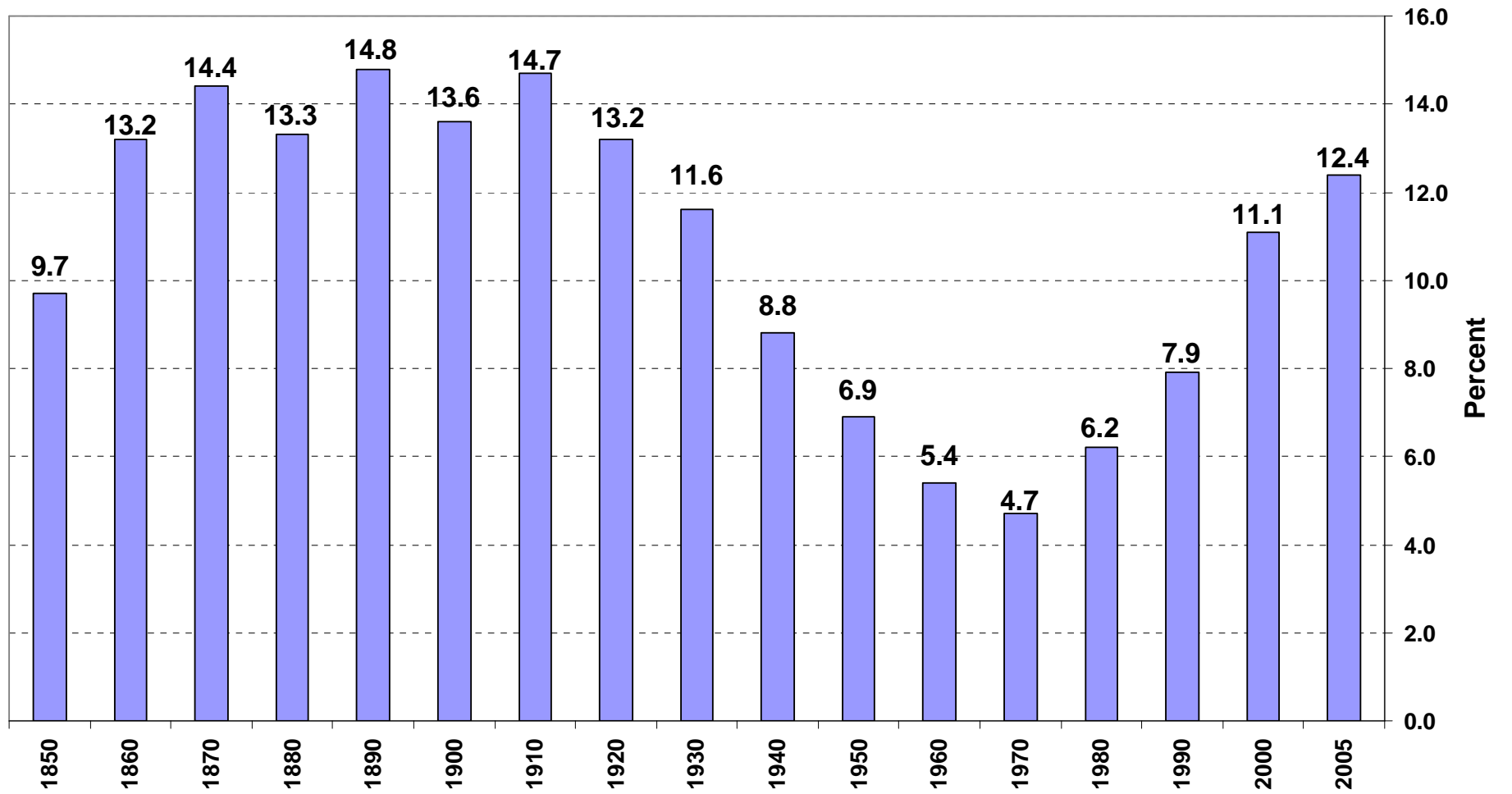
Global Migration

- n Most tends to be regional and within the same continent
- n More than half of international migrants traditionally have moved from one developing country to another
- n Since the 1990s, industrialized countries began to have a significant gain in their share of global migration. In the mid-1990s, 46 million international migrants were in the U.S., France, Germany, Canada, Australia, and the United Kingdom.

Total Foreign Born

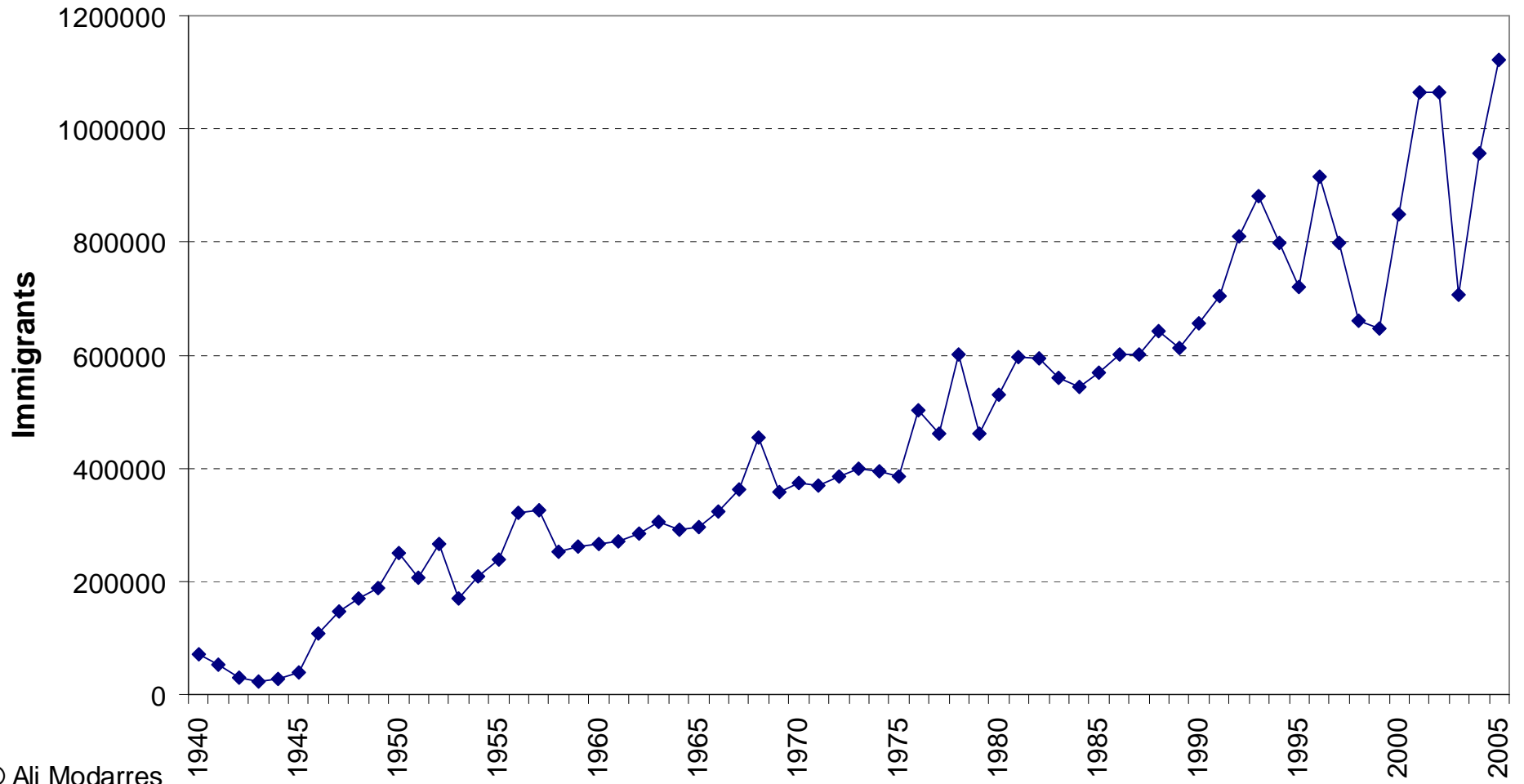


Percent Foreign Born Population in the U.S.



Magnitude and Geography

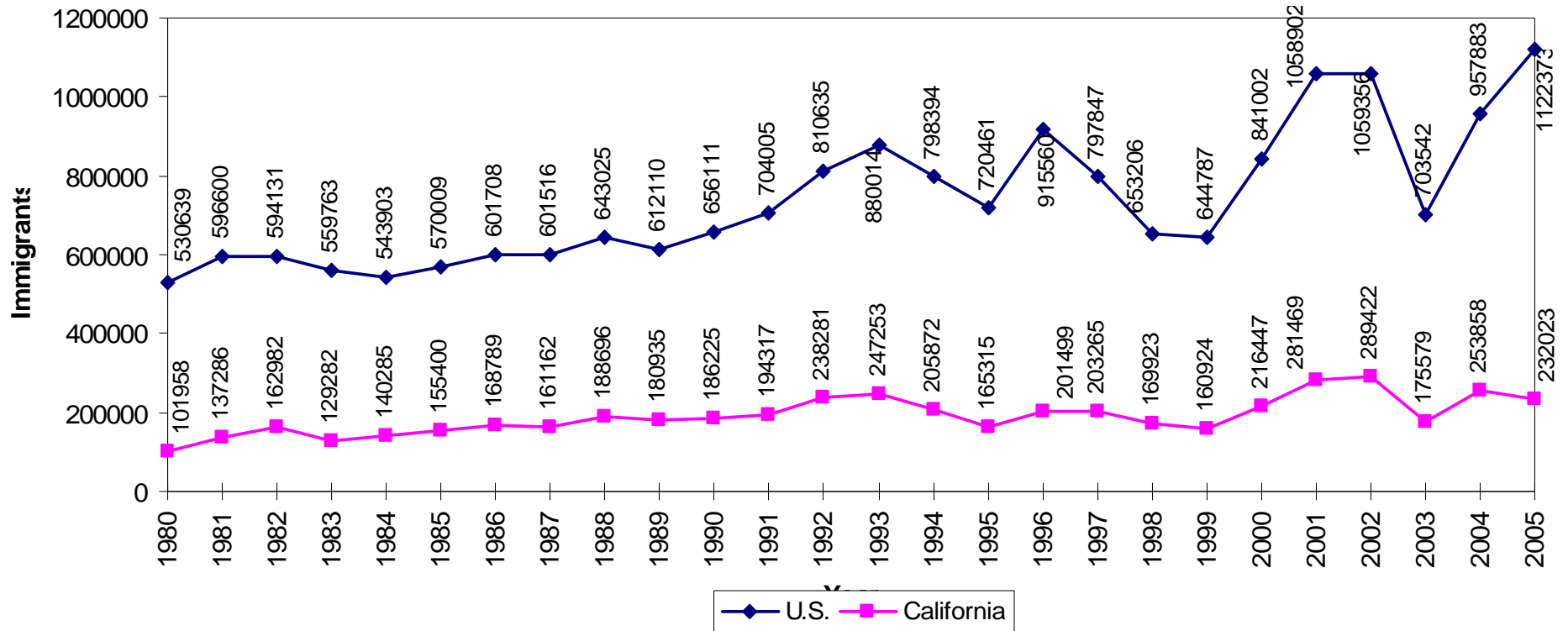
U.S. Immigration



© Ali Modarres

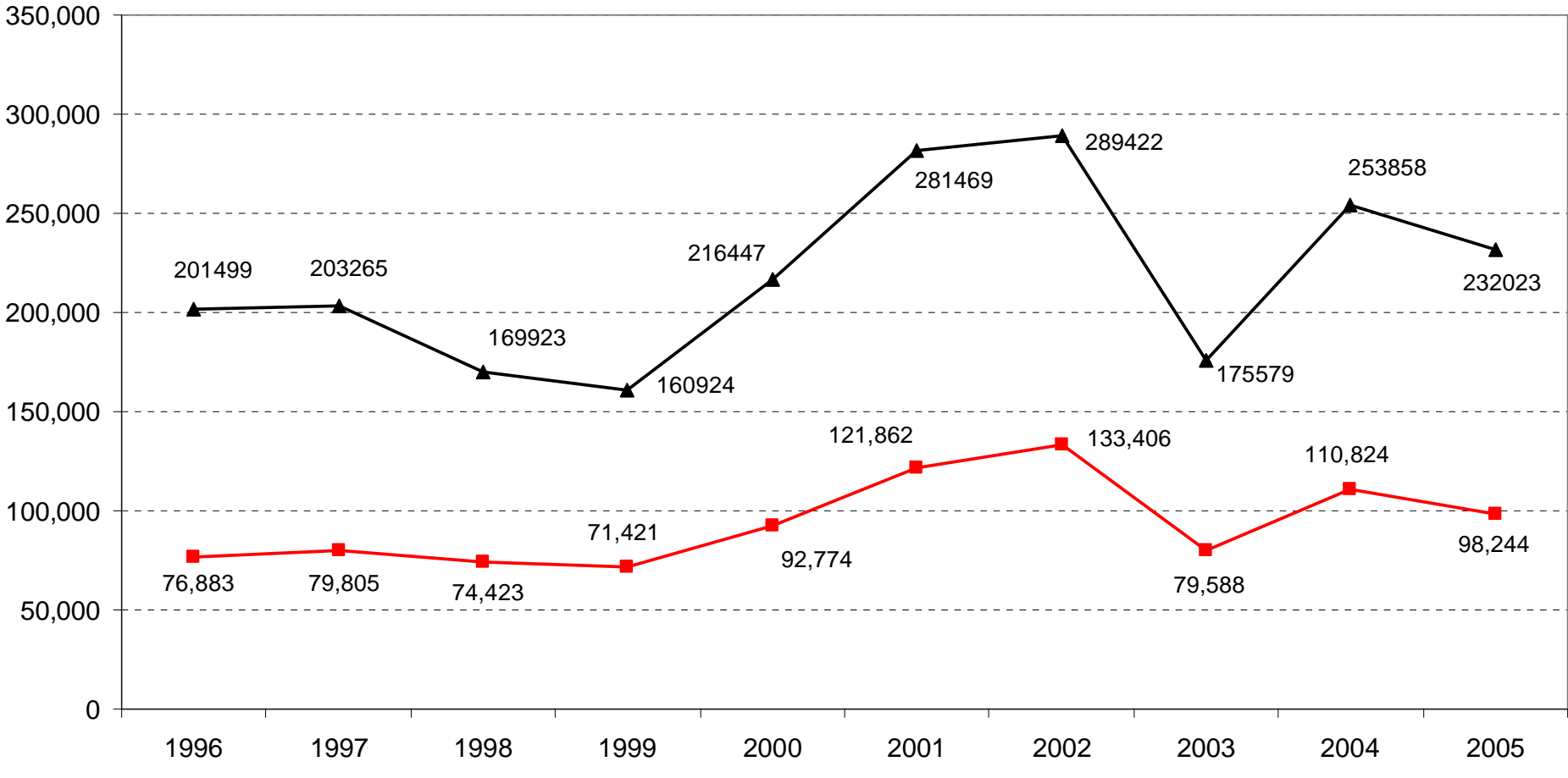
Source: U.S. Department of Homeland Security; Graph by Author

Immigration 1980-2005



Source: U.S. Department of Homeland Security; Graph by Author

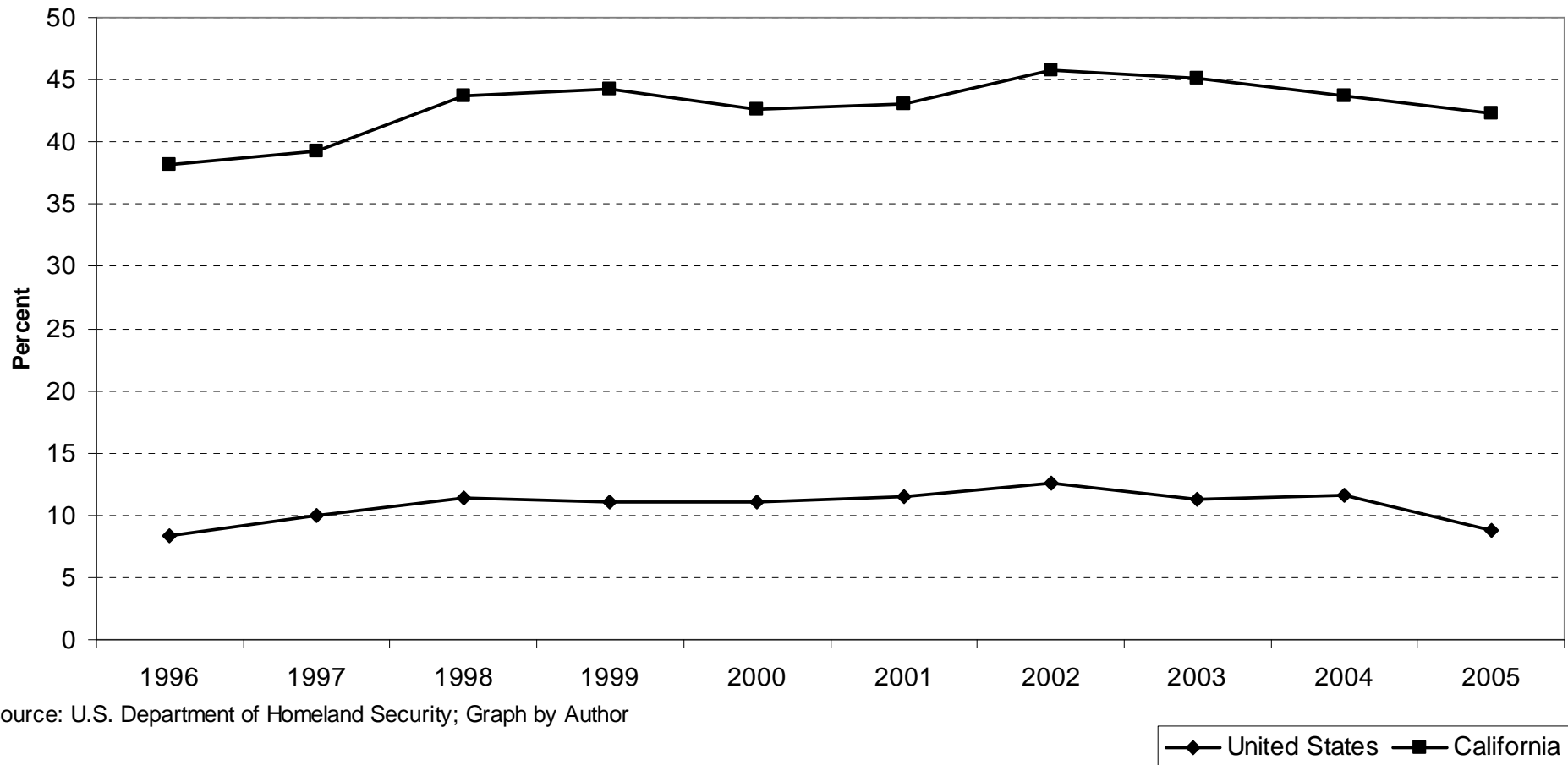
Legal Permanent Resident Flow



Source: U.S. Department of Homeland Security; Graph by Author

—■— Los Angeles-Long Beach-Santa Ana —▲— California

Los Angeles-Long Beach Legal Permaner Resident Flow As a Percentage of the U.S. and California



Region of Origin

- n National (35.7 million Foreign Born):
 - n 13.6% Europe
 - n 26.7% Asia
 - n 3.5% Africa
 - n 53.3% Latin America
- n California (9.6 million Foreign Born):
 - n 7.1% Europe
 - n 34.0% Asia
 - n 1.4% Africa
 - n 55.3% Latin America

Region of Origin

- n Los Angeles County (3.5 million Foreign Born):
 - n 5.2% Europe
 - n 31.2% Asia
 - n 1.3% Africa
 - n 61.0% Latin America

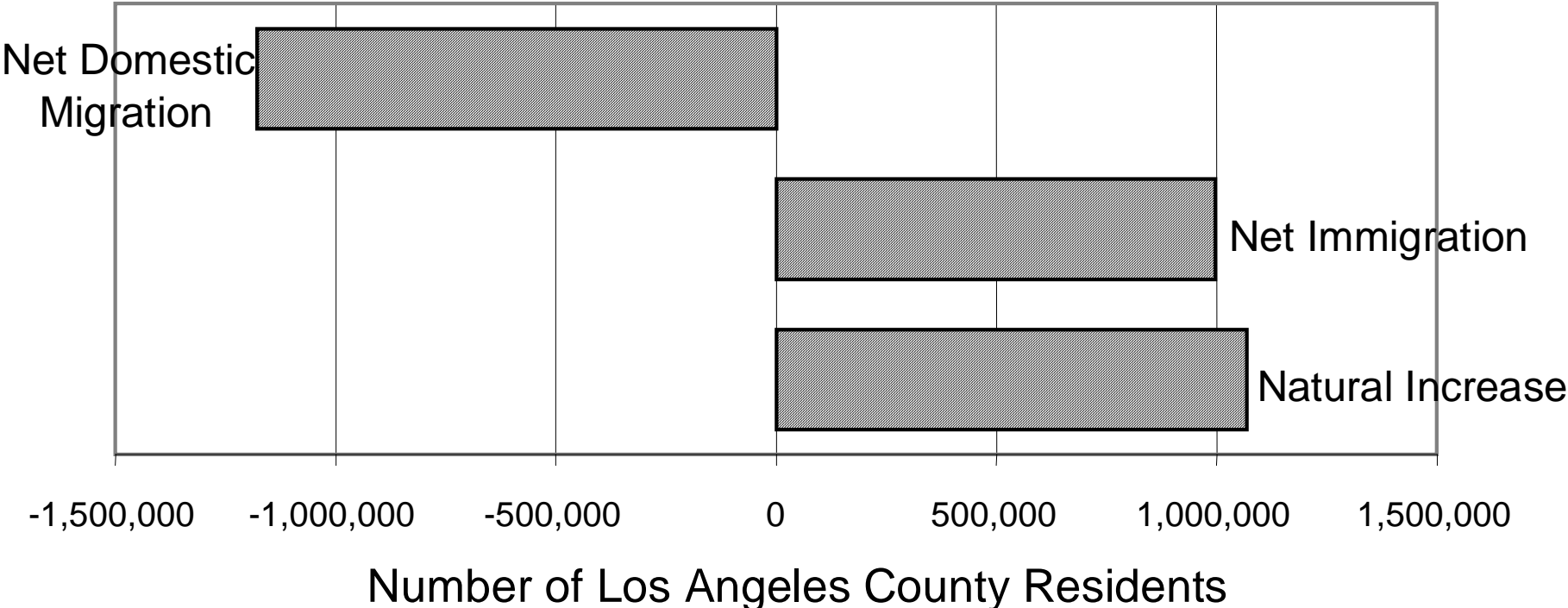
REGION OF BIRTH OF FOREIGN BORN	U.S.		California		County of Los Angeles		City of Los Angeles	
	Total	Percent	Total	Percent	Total	Percent	Total	Percent
Europe	4,915,557	15.8	696,578	7.9	194,503	5.6	100,252	6.6
Asia	8,226,254	26.4	2,918,642	32.9	1,022,289	29.6	376,767	24.9
Africa	881,300	2.8	113,255	1.3	43,024	1.2	20,730	1.4
Oceania	168,046	0.5	67,131	0.8	12,560	0.4	4,104	0.3
Latin America	16,086,974	51.7	4,926,803	55.6	2,143,049	62.1	996,996	65.9
Northern America	829,442	2.7	141,779	1.6	34,003	1	13,859	0.9
Total Foreign Born(excluding born at sea)	31,107,573	100	8,864,188	100	3,449,428	100	1,512,708	100
Total Population	281,421,906		33,871,648		9,519,338		3,694,820	
Percent Foreign Born	11.1		26.2		36.2		40.9	

Source: Census of Population and Housing, 2000

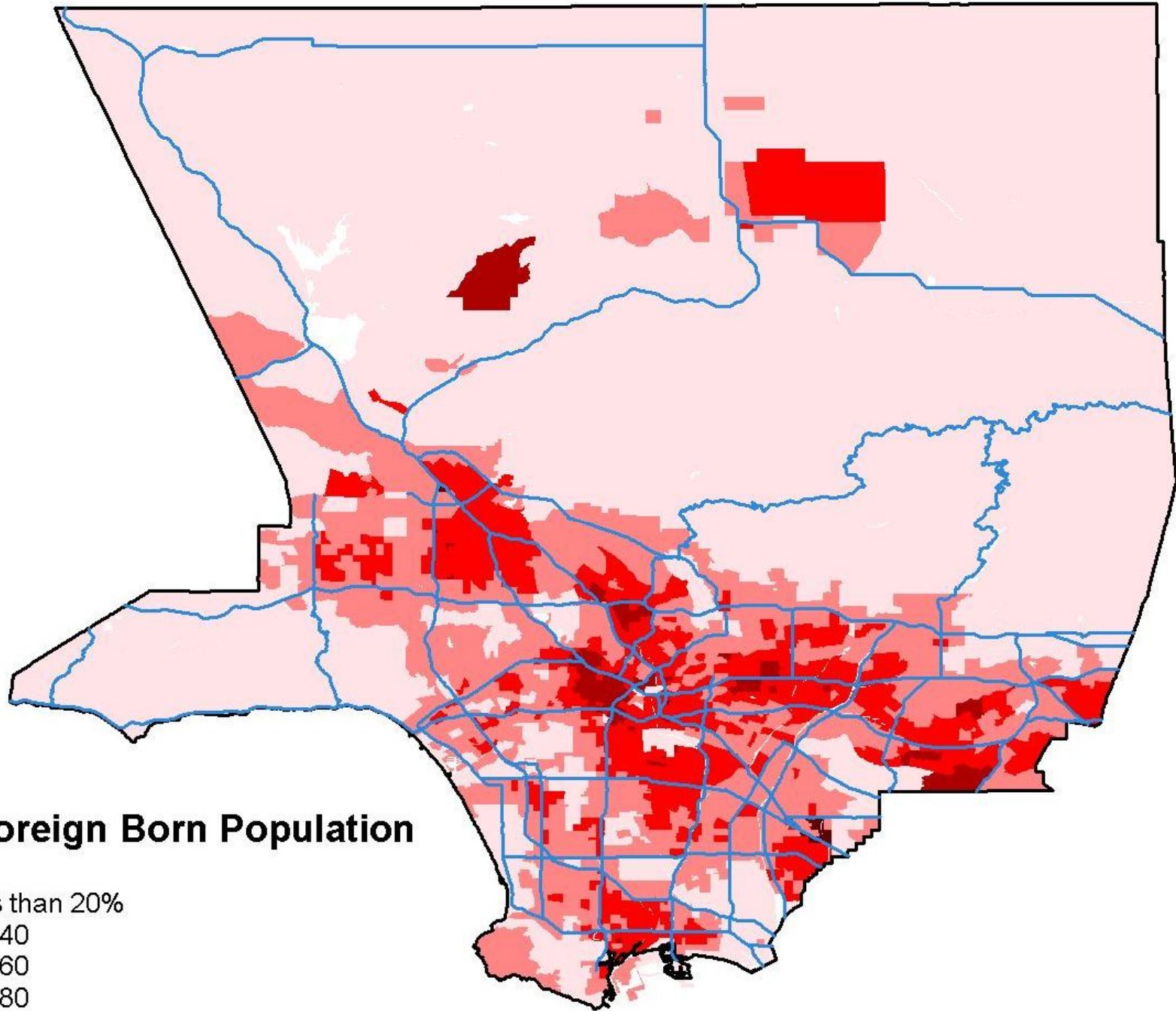
By 2005, % foreign born population for the state had increased slightly to 27%, while the County of Los Angeles remained at 36%.

Immigration and Population

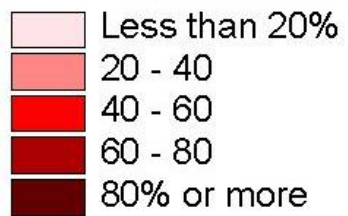
Change in Los Angeles County Population from 1990 to 1999



Source: The Cage of Poverty, 2000

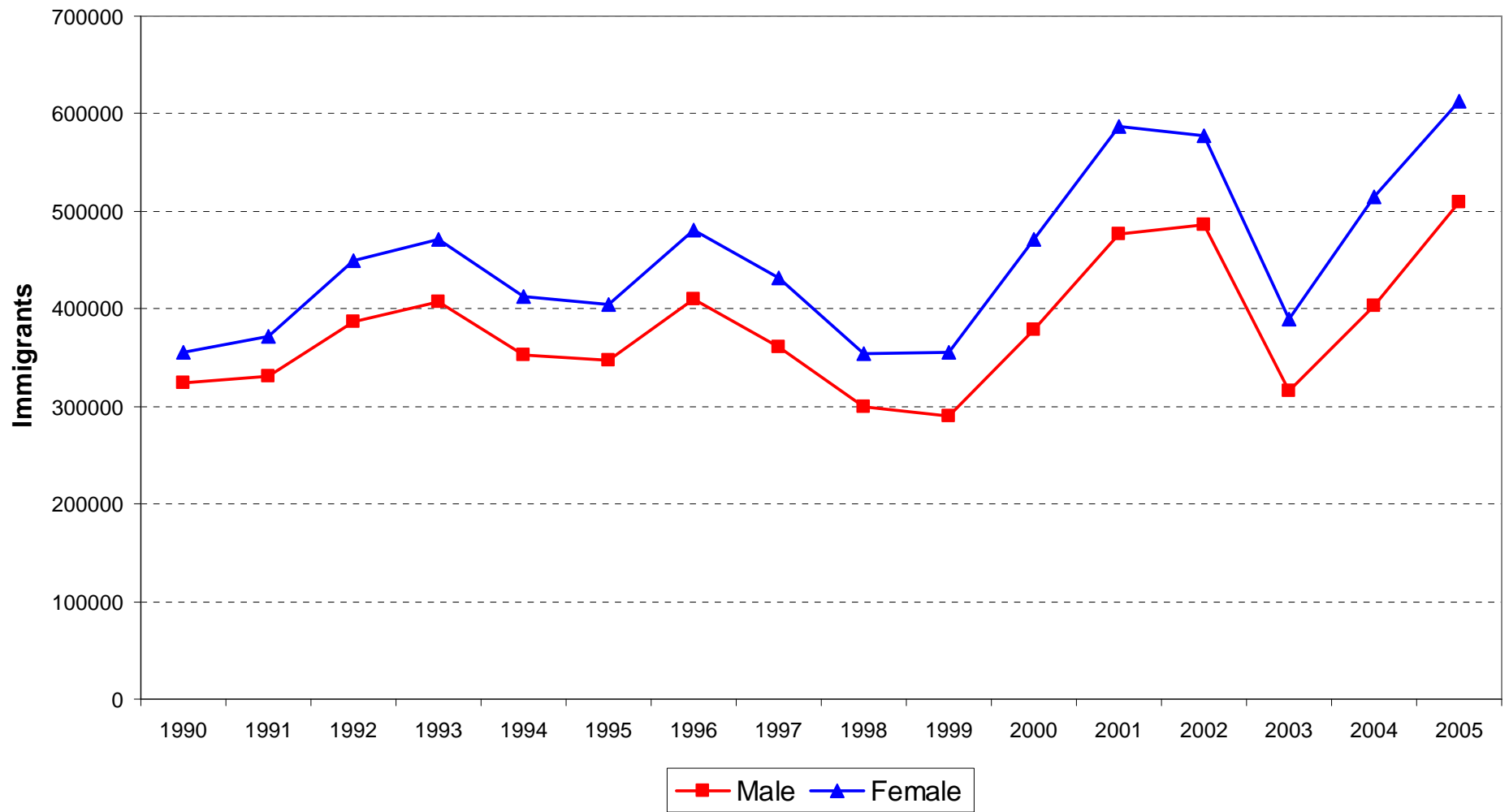


2000 Foreign Born Population



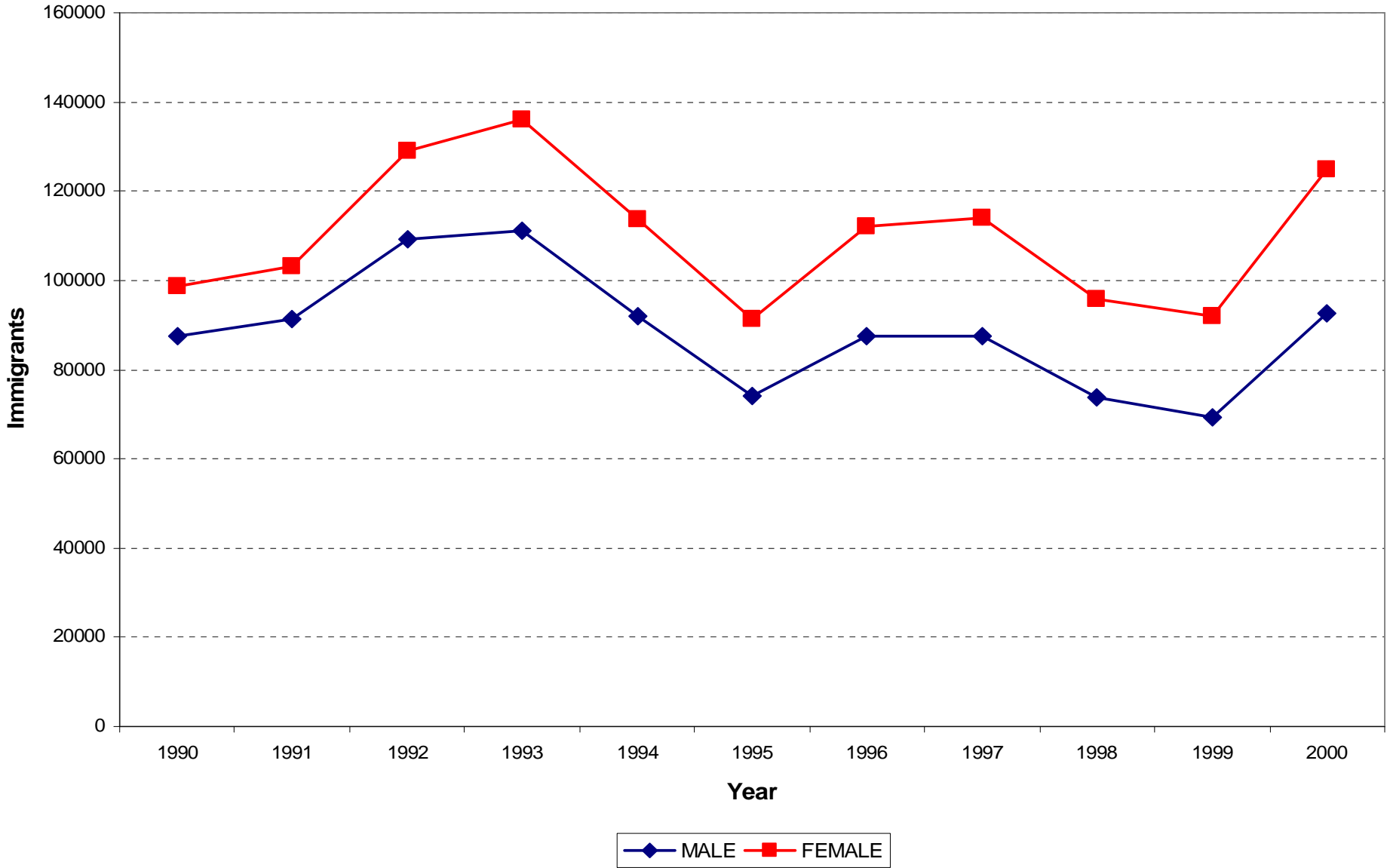
Gender

Immigration by Gender



Source: U.S. Department of Homeland Security; Graph by Author

Gender Distribution California



Source: U.S. Department of Homeland Security; Graph by Author

What did you say immigrants
cause?

Occupational Pattern

- n Immigration under the Skilled Labor category (about 10% of annual of immigration)
- n 61% of the FB (16 and older) are in the labor force (17.3 million).

National Occupational Pattern of the Foreign Born Population

OCCUPATION	Number	Percent
Management, professional, and related	4,574,120	28.4
Service	3,214,315	20.0
Sales and office	3,208,310	19.9
Farming, fishing, and forestry	328,620	2.0
Construction, extraction, and maintenance	1,677,340	10.4
Production, transportation, and material moving	3,080,970	19.2

Source: 2000 census

Ali Modarres, PBI

23

Labor Force Contribution

- n New immigrants contributed 47% to the labor force growth during the 1990s
- n From 2000 to 2003, immigrants share grew to more than half.
- n Native-born labor force? Smaller share over time?

Source:

Sum, Andrew; Khatiwada, Ishwar; Harrington, Paul; and Palma, Sheila (2003) "New Immigrants in the Labor Force and the Number of Employed New Immigrants in the U.S. from 2000 through 2003: Continued Growth Amidst Declining Employment Among the Native Born Population." Center for Labor Market Studies, Northeastern University, Boston, Massachusetts. http://www.nupr.neu.edu/01-04/immigration_jan.pdf.

The other side of the coin?

Poverty and Nativity

- ✓ 24.6% of all children in LA County were poor in 1999.
- ✓ Children made up 38.2% of all poor people.
- ✓ Immigrants' poverty rate was 21.3% (nationally, slightly over 15% of the foreign born families were at or below the poverty line).
- ✓ Natives' poverty rate was 15.9%.
- ✓ Naturalized Citizens' poverty rate was 12%.

Source: Census 2000.

Economic Restructuring

Employment by Selected Economic Sectors in the U.S.

